



# KING MEMORIAL PARK

Baltimore, MD

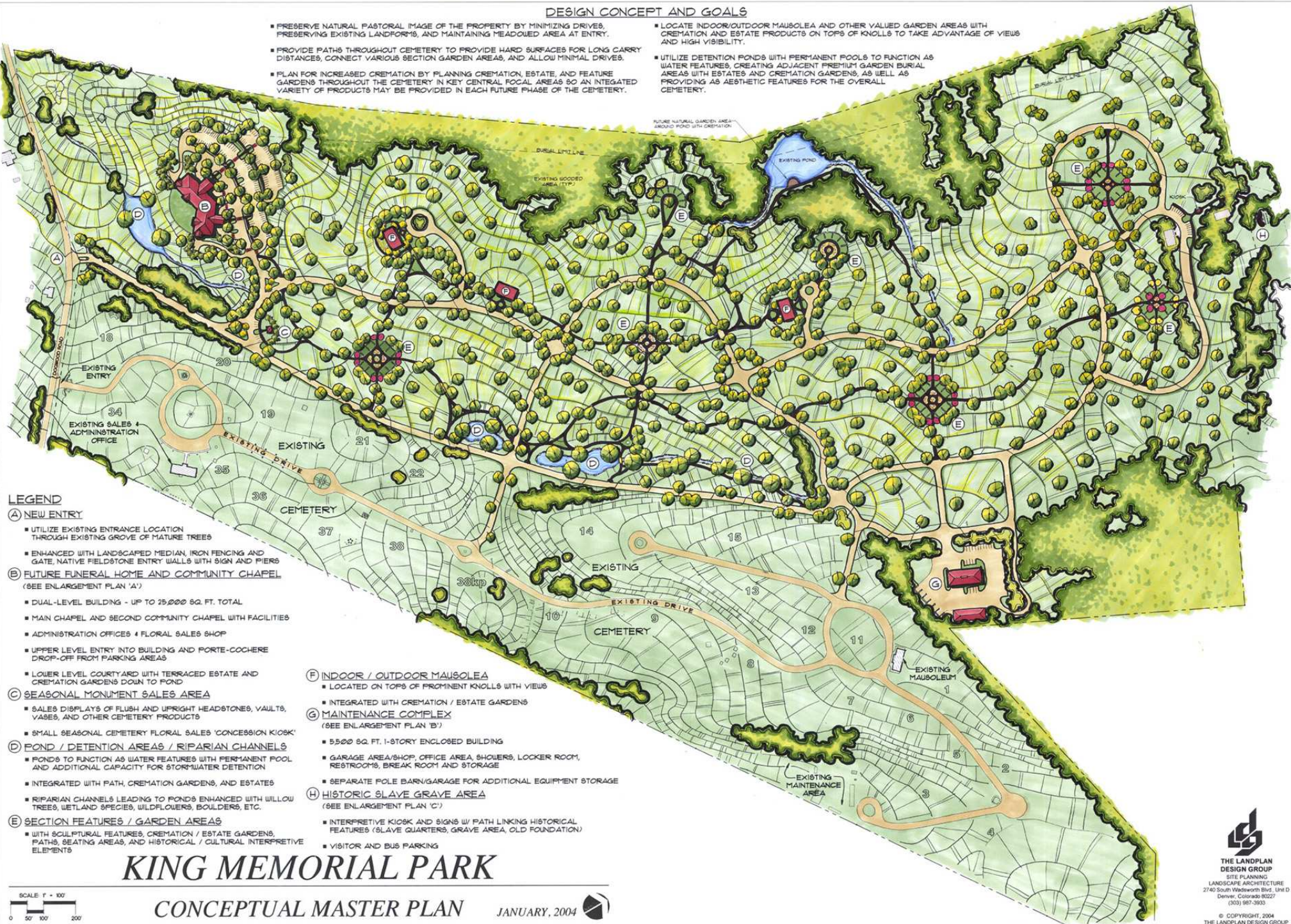


Marcorp's King Memorial Park's recent acquisition of 104 acres added to their existing cemetery making this 154 acre cemetery perhaps the largest African American Cemetery in the United States. Located in rural north Baltimore area, the cemetery's expansion into this rolling property will be carefully phased. To preserve the rural character, each section is planned to offer a theme feature around which a limited number of upright memorials will be clustered while outer areas will be flush memorials. An old slave grave site will be preserved and interpreted. Final design of a new entry and each section will include themes that reflect the African American community's many heritage and diverse contributions to the American culture. A new entry will feature a landscaped natural pond offering family estates and cremation gardens. In the future, a duel chapel funeral home and multi-purpose community facility with terrace will overlook it all.



## DESIGN CONCEPT AND GOALS

- PRESERVE NATURAL PASTORAL IMAGE OF THE PROPERTY BY MINIMIZING DRIVES, PRESERVING EXISTING LANDFORMS, AND MAINTAINING MEADOWED AREA AT ENTRY.
- PROVIDE PATHS THROUGHOUT CEMETERY TO PROVIDE HARD SURFACES FOR LONG CARRY DISTANCES, CONNECT VARIOUS SECTION GARDEN AREAS, AND ALLOW MINIMAL DRIVES.
- PLAN FOR INCREASED CREMATION BY PLANNING CREMATION, ESTATE, AND FEATURE GARDENS THROUGHOUT THE CEMETERY IN KEY CENTRAL FOCAL AREAS SO AN INTEGRATED VARIETY OF PRODUCTS MAY BE PROVIDED IN EACH FUTURE PHASE OF THE CEMETERY.
- LOCATE INDOOR/OUTDOOR MAUSOLEA AND OTHER VALUED GARDEN AREAS WITH CREMATION AND ESTATE PRODUCTS ON TOPS OF KNOLLS TO TAKE ADVANTAGE OF VIEWS AND HIGH VISIBILITY.
- UTILIZE DETENTION PONDS WITH PERMANENT POOLS TO FUNCTION AS WATER FEATURES, CREATING ADJACENT PREMIUM GARDEN BURIAL AREAS WITH ESTATES AND CREMATION GARDENS, AS WELL AS PROVIDING AS AESTHETIC FEATURES FOR THE OVERALL CEMETERY.



### LEGEND

#### (A) NEW ENTRY

- UTILIZE EXISTING ENTRANCE LOCATION THROUGH EXISTING GROVE OF MATURE TREES

- ENHANCED WITH LANDSCAPED MEDIAN, IRON FENCING AND GATE, NATIVE FIELDSTONE ENTRY WALLS WITH SIGN AND PIERS

#### (B) FUTURE FUNERAL HOME AND COMMUNITY CHAPEL (SEE ENLARGEMENT PLAN 'A')

- DUAL-LEVEL BUILDING - UP TO 25,000 SQ. FT. TOTAL
- MAIN CHAPEL AND SECOND COMMUNITY CHAPEL WITH FACILITIES
- ADMINISTRATION OFFICES & FLORAL SALES SHOP
- UPPER LEVEL ENTRY INTO BUILDING AND PORTE-COCHERE DROP-OFF FROM PARKING AREAS
- LOWER LEVEL COURTYARD WITH TERRACED ESTATE AND CREMATION GARDENS DOWN TO POND

#### (C) SEASONAL MONUMENT SALES AREA

- SALES DISPLAYS OF FLUSH AND UPRIGHT HEADSTONES, VAULTS, VASES, AND OTHER CEMETERY PRODUCTS
- SMALL SEASONAL CEMETERY FLORAL SALES 'CONCESSION KIOSK'

#### (D) POND / DETENTION AREAS / RIPARIAN CHANNELS

- PONDS TO FUNCTION AS WATER FEATURES WITH PERMANENT POOL AND ADDITIONAL CAPACITY FOR STORMWATER DETENTION
- INTEGRATED WITH PATH, CREMATION GARDENS, AND ESTATES
- RIPARIAN CHANNELS LEADING TO PONDS ENHANCED WITH WILLOW TREES, WETLAND SPECIES, WILDFLOWERS, BOULDERS, ETC.

#### (E) SECTION FEATURES / GARDEN AREAS

- WITH SCULPTURAL FEATURES, CREMATION / ESTATE GARDENS, PATHS, SEATING AREAS, AND HISTORICAL / CULTURAL INTERPRETIVE ELEMENTS

#### (F) INDOOR / OUTDOOR MAUSOLEA

- LOCATED ON TOPS OF PROMINENT KNOLLS WITH VIEWS
- INTEGRATED WITH CREMATION / ESTATE GARDENS

#### (G) MAINTENANCE COMPLEX (SEE ENLARGEMENT PLAN 'B')

- 5,500 SQ. FT. 1-STORY ENCLOSED BUILDING
- GARAGE AREA/SHOP, OFFICE AREA, SHOWERS, LOCKER ROOM, RESTROOMS, BREAK ROOM AND STORAGE
- SEPARATE POLE BARN/GARAGE FOR ADDITIONAL EQUIPMENT STORAGE

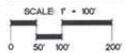
#### (H) HISTORIC SLAVE GRAVE AREA (SEE ENLARGEMENT PLAN 'C')

- INTERPRETIVE KIOSK AND SIGNS W/ PATH LINKING HISTORICAL FEATURES (SLAVE QUARTERS, GRAVE AREA, OLD FOUNDATION)
- VISITOR AND BUS PARKING

# KING MEMORIAL PARK

## CONCEPTUAL MASTER PLAN

JANUARY, 2004



THE LANDPLAN  
DESIGN GROUP  
SITE PLANNING  
LANDSCAPE ARCHITECTURE  
2740 South Wadsworth Blvd., Unit D  
Denver, Colorado 80227  
(303) 987-3933

© COPYRIGHT, 2004  
THE LANDPLAN DESIGN GROUP

**FUNERAL HOME DESIGN CONCEPT**

- DUAL-LEVEL BUILDING - APPROXIMATELY 10,000 SQ. FT. FOOTPRINT (20,000 SQ. FT. TOTAL) COMPRISED OF MAIN CHAPEL, OFFICES, FLORAL SALES SHOP, AND MAIN ENTRY ATRIUM
- ADDITIONAL COMMUNITY CHAPEL, RECEPTION ROOM, AND OTHER FACILITIES INTEGRATED INTO FUNERAL HOME
- UPPER LEVEL ENTRY INTO BUILDING FROM PARKING AND PORTE-COCHERE DROP-OFF AREAS FOR HEARSE AND VISITORS
- LOWER LEVEL TO INCLUDE OFFICES, SERVICE AREAS, AND ACCESS TO COURTYARD AND TERRACED GARDEN AREAS AND POND
- SCREEN LOWER LEVEL SERVICE/DELIVERY AREAS

**COURTYARD AND TERRACED GARDEN DESIGN CONCEPT**

- CREATE OUTDOOR GARDEN RECEPTION COURTYARD WITH CREMATION OVERLOOKING POND
- TERRACED ESTATES AND CREMATION GARDENS AROUND POND
- POND WITH PERMANENT POOL
- RIPARIAN DRAINAGE CHANNEL INTO AND OUT OF POND ENHANCED W/ WETLAND SPECIES BOULDERS, WILDFLOWERS, WILLOWS, ETC.

**MAIN ENTRY DESIGN CONCEPT**

- LANDSCAPED MEDIAN, IRON FENCING AND GATE, NATIVE FIELDSTONE ENTRY WALLS AND PIERS, AND LANDSCAPING TO DISTINGUISH NEW ENTRANCE AS MAIN ENTRANCE TO THE CEMETERY AND FUNERAL HOME
- PRESERVE EXISTING ALLEE OF EXISTING MATURE TREES TO ENCLOSE AND DEFINE ENTRY DRIVE TO CEMETERY AND FUNERAL HOME

**PARKING DESIGN CONCEPTS**

- PARKING SCREENED BY BUILDING LOCATION, TOPOGRAPHY, AND LANDSCAPE TO MAINTAIN MEADOWED PASTORAL IMAGE FROM DOGWOOD ROAD TO FUNERAL HOME
- MAIN PARKING AREA - APPROXIMATELY 10 SPACES - HANDICAP ACCESSIBLE TO BUILDING
- HANDICAP AND/OR INDIVIDUAL VISITOR PARKING ALONG ENTRY DRIVE CLOSEST TO BUILDING - APPROXIMATELY 10 SPACES
- LOWER LEVEL OVERFLOW PARKING AREA - APPROXIMATELY 40 SPACES - POTENTIALLY GRASSCRETE OR OTHER ALTERNATIVE PAVEMENT

**MONUMENT SALES AREA DESIGN CONCEPT**

- APPROX. 5,000 SQ. FT. OUTDOOR DISPLAY AREA FOR MONUMENTS, VAULTS, AND OTHER MEMORIAL PRODUCTS
- POTENTIAL SMALL 500 - 1,000 SQ. FT. FLORAL SHOP FOR CEMETERY VISITORS IN ADDITION TO POSSIBLE FLORAL SALES SHOP IN FUNERAL HOME
- VISIBLE FROM MAIN DRIVE AS VISITORS ENTER CEMETERY



ENLARGEMENT A - FUNERAL HOME CONCEPT PLAN

1" = 40'

**KING MEMORIAL PARK**  
**CONCEPTUAL ENLARGEMENT PLANS**